



Bushing BMX (Steel + Porous Bronze + Acetal Resin with Pockets)

COMPOSIZIONE=ACCIAIO/
BRONZO POROSO/
COPOLIMERO ACETALICO
ALVEOLATO

ASSENZA DI ELETTRICITÀ
STATICA.
COEFFICIENTE D'ATTRITO MOLTO
BASSO. MIGLIORI PRESTAZIONI
CON CONTROPEZZO IN GHISA
O ACCIAIO E L'USO DI GRASSO.

TOLLERANZE CONSIGLIATE PER
GLI ALBERI:
Ø3-Ø4=h6
Ø5-Ø75=f7
Ø80-Ø300=h8
TOLLERANZE CONSIGLIATE PER
LE SEDI:
Ø3-Ø4=H6
Ø5-Ø300=H7

COMPOSITION=STEEL/
POROUS BRONZE/ ACETAL
RESIN WITH POCKETS

ABSENCE OF ELECTROSTATIC
CHARGES. LOW FRICTION
FACTOR. BETTER
PERFORMANCES. WITH CAST
IRON OR STEEL SHAFT AND USE
OF GREASE.

RECOMMENDED SHAFTS
TOLERANCES:
Ø3-Ø4=h6
Ø5-Ø75=f7
Ø80-Ø300=h8
RECOMMENDED SEAT
TOLERANCES:
Ø3-Ø4=H6
Ø5-Ø300=H7

COMPOSITION=ACIER/BRONZE
POREUX/ COPOLYMERE/ RESIN
ACETALE AVEC ALVEOLES

ABSENCE D'ELECTRICITE
STATIQUE. COEFFICIENT DE
FROTTEMENT TRES REDUIT.
PERFORMANCES MEILLEURES
AVEC CONTREPIECE EN FONTE
OU ACIER ET L'EMPLOY DE
GRAISSE.

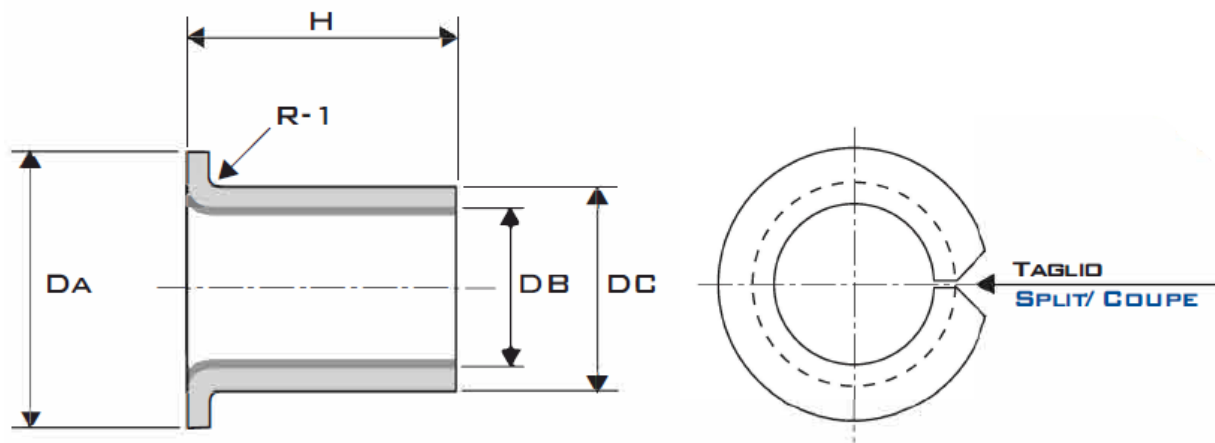
TOLERANCES CONSEILLEES
POUR LES AXES:
Ø3-Ø4=h6
Ø5-Ø75=f7
Ø80-Ø300=h8
TOLERANCES CONSEILLEES
POUR LES ALESAGES:
Ø3-Ø4=H6
Ø5-Ø300=H7

CAPACITÀ DI CARICO STATICO	STATIC LOAD CAPACITY	CAPACITE DE CHARGE STATIQUE	250N/MM ²
CAPACITÀ DI CARICO DINAMICO	DYNAMIC LOAD CAPACITY	CAPACITE DE CHARGE DYNAMIQUE	140N/MM ²
VELOCITÀ MAX A SECCO	MAX SPEED LIMIT (DRY)	VITESSE MAXI A SEC	2,5M/SEC.
VELOCITÀ MAX CON OLIO	MAX SPEED LIMIT (OIL)	VITESSE MAXI AVEC HUILE	5M/SEC.
TEMPERATURA MAX CONTINUA	MAX CONTINUOUS TEMPERATURE	TEMPERATURE MAXI CONTINUE	-40/+90°C
TEMPERATURA MAX INTERMITTENTE	MAX INTERMITANT TEMPERATURE	TEMPERATURE MAXI INTERMITTENT	-40/+130°C
COEFFICIENTE D'ATTRITO A SECCO	FRICTION COEFFICIENT (DRY)	COEFFICIENT DE FROTTEMENT A SEC	0,15-0,25
COEFFICIENTE D'ATTRITO CON GRASSO	FRICTION COEFFICIENT (GREASE)	COEFFICIENT DE FROTTEMENT AVEC GRAISSE	0,05-0,15
DILATAZIONE LINEARE	LINEAR EXPANSION	DILATATION LINEAIRE	3x10 ⁻⁵ /K
CONDUCIBILITÀ TERMICA	THERMAL CONDUCTIVITY	CONDUCTIBILITE THERMIQUE	40W/MXK

Cylindrical Dimensions ID x OD x Length

Flange Dimensions ID x OD x Flange OD x Flange Thickness x Length

DIMENSIONI DIMENSIONS			TOLLERANZE TOLERANCES		LUNGHEZZE (TOLLERANZA L +/- 0,25) LENGTHS/ LONGUEUR (TOLERANCE L +/- 0,25)																					
D	D	Ø	ALBERO SHAFT/ AXES	SECC SEAT/ ALCSABCS	3	4	5	6	8	10	12	15	20	25	30	35	40	50	60	70	80	100	115			
		MIN/MAX																								
3	4,5	0,750	H5	0/-0,006	H6	+0,008	X	X	X	X																
4	5,5	0,730		0/-0,008		0	X	X	X	X																
5	7	1,005 0,980	F7	-0,010	H7	+0,015		X	X	X																
6	8			-0,022		0		X	X	X																
8	10			-0,013				X	X	X																
10	12			-0,028				X	X	X	X	X														
12	14							X	X	X	X	X	X													
13	15							X	X	X	X	X	X													
14	16							X	X	X	X	X	X													
15	17						-0,016		0	X	X	X	X													
16	18						-0,034			X	X	X	X	X												
17	19													X	X	X										
18	20										X	X	X													
20	22										X	X	X	X												
20	23	1,505 1,475	F7		H7	+0,021				X	X	X	X													
22	25			0				X	X	X	X															
24	27						-0,020		0				X	X	X	X										
24	28						-0,041						X	X	X	X										
25	28									X	X	X	X				X									
28	32	2,005 1,970	F7		H7	+0,025					X	X	X	X			X									
30	34			0				X	X	X	X								X							
32	36						-0,025		0				X	X	X	X	X			X	X					
35	39						-0,050						X	X	X	X	X			X	X					
40	44												X	X	X	X	X			X	X					
45	50	2,505 2,460	F7		H7	+0,030					X	X	X	X			X	X	X							
50	55			0				X	X	X	X	X							X	X	X					
55	60						-0,030		0				X	X	X	X			X	X	X					
60	65						-0,060						X	X	X	X			X	X	X					
65	70												X	X	X	X			X	X	X					
70	75	2,490 2,440	F7		H7	+0,035					X	X	X	X			X	X	X							
75	80			0				X	X	X	X								X	X	X					
80	85						0/-0,046							X	X	X			X	X	X					
85	90													X	X	X			X	X	X					
90	95													X	X	X			X	X	X					
95	100						0		0					X	X	X	X			X	X	X				
100	105						-0,054							X	X	X	X			X	X	X				
105	110													X	X	X	X			X	X	X				
110	115													X	X	X	X			X	X	X				
115	120													X	X	X	X			X	X	X				
120	125	2,465 2,415	H8		H7	+0,040					X	X	X	X			X	X	X							
125	130			0				X	X	X	X								X	X	X					
130	135													X	X	X	X			X	X	X				
135	140													X	X	X	X			X	X	X				
140	145													X	X	X	X			X	X	X				
145	150													X	X	X	X			X	X	X				
150	155						0							X	X	X	X			X	X	X				
155	160						-0,063							X	X	X	X			X	X	X				
160	165													X	X	X	X			X	X	X				
165	170													X	X	X	X			X	X	X				
170	175										X	X	X	X			X	X	X							
175	180										X	X	X	X			X	X	X							
180	185										X	X	X	X			X	X	X							
200	205										X	X	X	X			X	X	X							
205	210										X	X	X	X			X	X	X							
210	215			0							X	X	X	X			X	X	X							
215	220			-0,072							X	X	X	X			X	X	X							
220	225										X	X	X	X			X	X	X							
250	255										X	X	X	X			X	X	X							
280	285			0							X	X	X	X			X	X	X							
300	305			-0,081							X	X	X	X			X	X	X							



TIPO/ TYPE	DB	DC	DA (±0,5)	H (0,25)	TIPO/ TYPE	DB	DC	DA (±0,5)	H (0,25)
BMF 06.04	6	8	12	4	BMF 15.17	15	17	23	17
BMF 06.07	6	8	12	7	BMF 16.12	16	18	24	12
BMF 06.08	6	8	12	8	BMF 16.17	16	18	24	17
BMF 08.05,5	8	10	15	5,5	BMF 18.12	18	20	26	12
BMF 08.07,5	8	10	15	7,5	BMF 18.17	18	20	26	17
BMF 08.09,5	8	10	15	9,5	BMF 18.22	18	20	26	22
BMF 10.07	10	12	18	7	BMF 20.11,5	20	23	30	11,5
BMF 10.09	10	12	18	9	BMF 20.16,5	20	23	30	16,5
BMF 10.12	10	12	18	12	BMF 20.21,5	20	23	30	21,5
BMF 10.17	10	12	18	17	BMF 25.11,5	25	28	35	11,5
BMF 12.07	12	14	20	7	BMF 25.16,5	25	28	35	16,5
BMF 12.09	12	14	20	9	BMF 25.21,5	25	28	35	21,5
BMF 12.12	12	14	20	12	BMF 30.16	30	34	42	16
BMF 12.17	12	14	20	17	BMF 30.26	30	34	42	26
BMF 14.12	14	16	22	12	BMF 35.16	30	34	42	16
BMF 14.17	14	16	22	17	BMF 35.26	35	39	47	26
BMF 15.09	15	17	23	9	BMF 40.26	40	44	53	26
BMF 15.12	15	17	23	12					

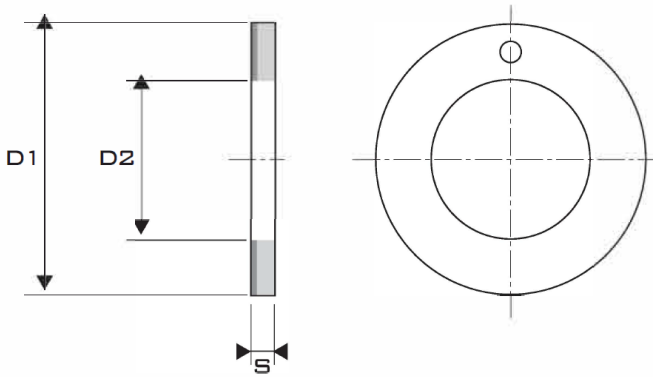


TABELLA DIMENSIONALE RALLE REGGISPINTA BM/BMX
DIMENSIONAL CHART STANDARD THRUST WASHER BM/BMX
TABLEAUX DIMENSIONNELS RONDELLES BM/BMX

TIPO/ TYPE	D2 +0,25	D1 -0,25	S -0,05
BMR 10.20	10	20	1,5
BMR 12.24	12	24	1,5
BMR 14.26	14	26	1,5
BMR 16.30	16	30	1,5
BMR 18.32	18	32	1,5
BMR 20.36	20	36	1,5
BMR 22.38	22	38	1,5
BMR 26.44	26	44	1,5
BMR 28.48	28	48	1,5
BMR 32.54	32	54	1,5
BMR 38.62	38	62	1,5
BMR 42.66	42	66	1,5
BMR 48.74	48	74	2
BMR 52.78	52	78	2
BMR 62.90	62	90	2